

# Empowering employees with chronic conditions to lead healthier lives

As more people cope with diabetes and other chronic conditions, employers like you feel the impact. From rising medical costs to increased absenteeism and reduced productivity, the health of your employees affects the health of your business. Fortunately, you can help enable your staff to lead healthier lives by offering them **Verily Onduo**.

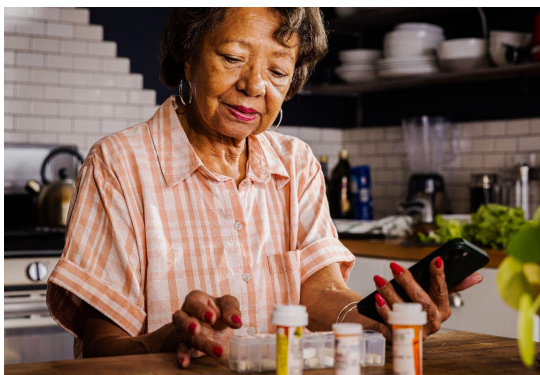
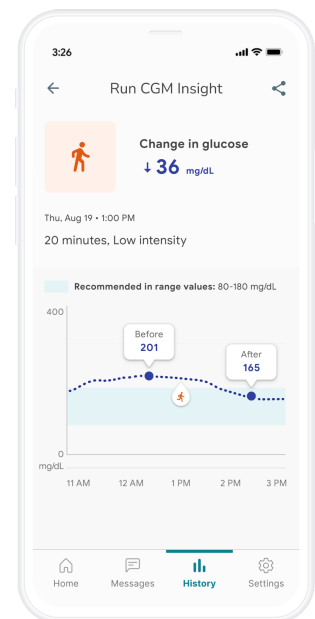
## Managing chronic care — anytime, anywhere

Onduo is a virtual, precision care management solution for people with type 1 or 2 diabetes and hypertension, as well as pre-diabetes and healthy weight through our partnership with Good Measures.

We deliver Onduo through a user-friendly app, giving members greater access to convenient support that makes managing complex conditions simpler. And our program compliments primary care, offering more support in the crucial moments between doctor visits.\*

### Program inclusions

- Intuitive app
- Multi-level care team
- Virtual clinic for specialist access\*\*
- Library of health education
- Full type 2 diabetes program in Spanish
- Connected devices, such as blood glucose monitors
- Actionable insights on medication, diet, exercise and more



### Care team support

Our care teams include dedicated health coaches, registered dietitians, board-certified specialists\*\* and pharmacists, all collaborating on each unique member's care plan, including medication management and adherence support.

They also connect with external providers to help close care gaps, such as preventive medications.

## Building precision pathways to better health

Precision care means we build personalized plans for members and their own health journeys, addressing lifestyle, health needs and other factors, such as social determinants of health.

### Whole-person approach

We also address health holistically, connecting with members on meal planning, activity levels and stress on their terms for enabling better self-care and lasting healthy habits.

### Fueled by data

We analyze data members report, combined with data from connected devices and payors, to inform tailored approaches provided through our app and care teams

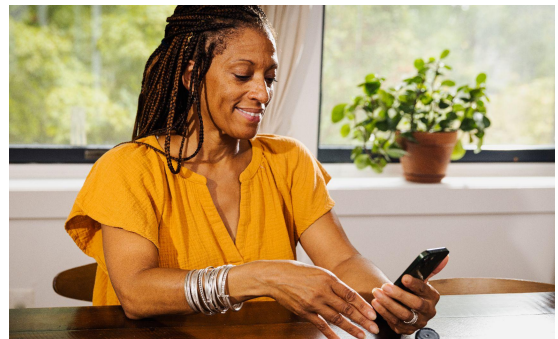
## Demonstrating health outcomes

When holistic data analysis meets human-centric care, your employees can realize better outcomes. In a peer-reviewed clinical study, members with type 2 diabetes had significantly improved health markers, such as blood glucose control (A1C), systolic blood pressure, total cholesterol and weight.<sup>†1</sup>

## Excelling in the market

Verily Onduo excels in virtual care management as one solution for multiple conditions, including type 1 and 2 diabetes, and more.

- End-to-end support in Spanish
- HQAA<sup>®</sup> and URAC<sup>®</sup> accreditations
- ASO sales training and support
- Clinical excellence and privacy champions



## Support a healthier workforce to support a healthier workplace.

To start a discussion or learn more, visit [verily.com/solutions/onduo/contact](https://verily.com/solutions/onduo/contact).

\*The Onduo app is not intended as a substitute for individuals' primary care physicians' care or guidance. Onduo members must discuss their treatment plan with said providers before making major lifestyle changes.

\*\* When clinically indicated | † Weight loss results are not guaranteed. Individual weight loss outcomes, amount and time duration will vary.

A1C = glycosylated hemoglobin, which is a measure of average blood glucose (sugar) levels over three months and the primary test/outcome for monitoring diabetes

1. Majithia AR, Kusiak CM, Improved Glycemic Outcomes in Adults With Type 2 Diabetes Participating in a Continuous Glucose Monitor Driven Virtual Diabetes Clinic: A Prospective J Med Internet Res. 2020;22(8):e21778. doi:10.2196/21778

Disclaimer: Onduo offers certain care management and coordinated clinical care programs for eligible individuals. Onduo LLC and a network of affiliated professional entities (collectively, "Onduo") collaborate to offer the services. Onduo services are meant to be used in conjunction with regular in-person clinical services and not intended to replace routine primary care. To preserve member privacy the people pictured are not actual Onduo members.

Good Measures<sup>®</sup> is a registered trademark of Good Measures, LLC.

